



JOHN DEERE

WATER TECHNOLOGIES

RO-DRIP[®]

RO-DRIP | 3/4 RO-DRIP | RO-DRIP XL

THE RIGHT CHOICE IN DRIP TAPE

RO-DRIP[®] provides the most reliable, cost-effective solution for all your sub-surface and above ground drip irrigation needs. RO-DRIP is the only drip tape specifically engineered to deliver uniform flow rates while addressing the most difficult maintenance issue faced by drip growers today: blockage during high-contaminant conditions.

Our patented RO-DRIP design employs two independent anti-plugging systems: Vortex Flow Action, which resists clogs by keeping particulate in suspension; and our exclusive Expanding Flow Channel, which reacts to blockages by actually changing shape, often purging even the toughest particulate build-up. Additionally, our patented manufacturing process creates a precision-molded flow channel with a large cross-section, which can pass larger particulate and deliver the uniform flow rates you demand.

As a member of the John Deere family of products, you can be sure RO-DRIP reflects the tradition, integrity, and innovation that have made John Deere's Irrigation a world leader in cost-effective, precision water delivery systems.



RO-DRIP delivers on the promise of reduced operating costs, improved crop quality, and greater gross yield required by today's globally competitive grower. No other drip tape has been as extensively designed and field tested to deliver the plug-resistance and durability you expect from a high-performance drip system. Applications include fruits, vegetables, cane, vineyards, fiber, and flowers.

PRODUCT SELECTION TIP | THICKNESS

5 mil - Used where rocks and pests are at a minimum and where cost is an important factor. Can be used on the surface or in subsurface applications with mulch. Usually used by experienced drip tape growers.

6 mil - Used where rocks and pests are at a minimum and where cost is an important factor. This tape is more resilient than 5 mil and more cost effective than 8 mil.

8 mil - Recommended for new drip tape users seeking a thin walled yet durable tape and for experienced growers who double crop or use their tape for long season crops.

10 mil - Added thickness makes this tape more resistant to mechanical damage from rocky soils and insects than its thinner walled counterparts. This product is well suited for multi-season use in surface or sub-surface applications.

13 mil - Similar in performance to 15 mil but a more cost effective alternative when slightly less resilience and durability are acceptable. Frequently replaces 15 mil.

15 mil - Our most durable product. Good choice for harsh field conditions and when many uses and installation cycles are expected. Allows for highest flushing pressures.



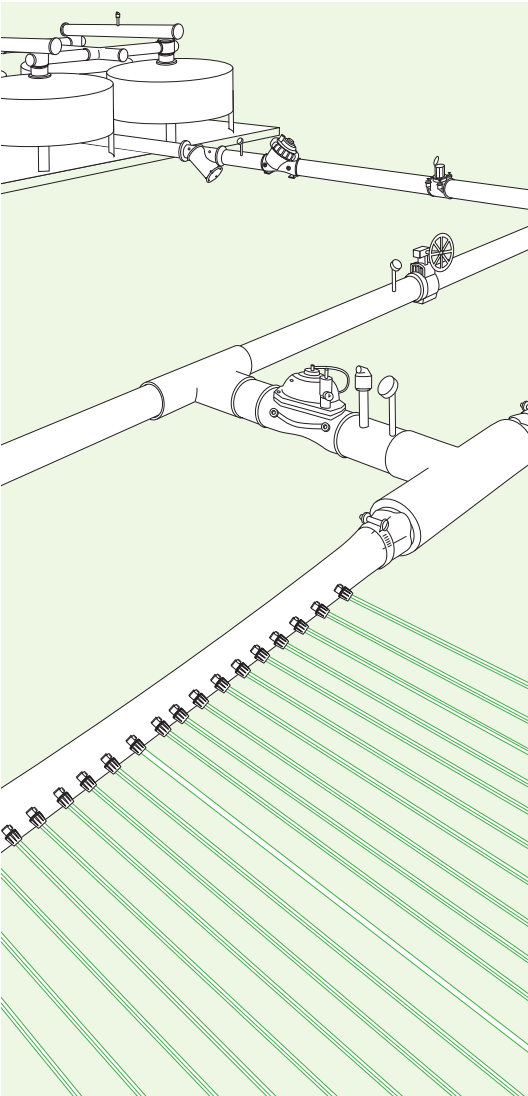
GENERAL USE GUIDELINES:

Use proper regulating devices to obtain a pressure of 6-10 PSI at the tape inlet. If RO-DRIP® is used on sloping terrain, verify that the maximum recommended operating pressure will not be exceeded at any point on the slope. Whenever possible, orient the drip tape in a direction which runs across the slope to ensure maximum application uniformity. In all system designs, air vents should be included at the ends of sub-mains and at all high points in the system.

Clean water is a necessary condition for proper drip tape operation. Evaluate your water source to select a proper filtration method and, in all cases, use at least a 140 mesh filtration. When injecting fertilizers or chemicals through RO-DRIP, use only water-soluble products and locate the injection point upstream of the main filter. Injected chemicals must be compatible with each other and with the irrigation water or precipitation may occur. After each injection cycle, continue irrigating with clean water for enough time to flush all chemicals from the system.

RO-DRIP can be installed on the surface, below the surface, or in an open "V-ditch" 2 to 4 inches deep. In subsurface applications, the drip tape should be pressurized immediately after installation. A subsurface or V-ditch placement should be used with transparent plastic mulch to prevent burn damage to the drip tape. Only use properly designed equipment for installing RO-DRIP. Be sure the equipment is free of sharp edges and burrs, and does not subject the tape to excessive tension during installation. Always install drip tape with the emitter outlets facing upward, to prevent contaminants which settle when the system is shut down from blocking or clogging the emitter passageways.

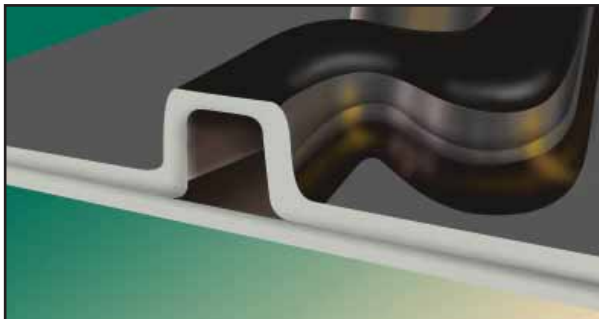
Pest management is necessary before installation and during use of RO-DRIP to avoid damage from insects, rodents and other animals. Upon initial system startup, flush filters, supply lines and sub-mains with clean water. After flushing sub-mains, flush each drip tape lateral. If water quality is a concern, it may also be necessary to periodically flush drip tape laterals throughout the growing season by opening their ends while the system is running. During flushing, the flow rate out of the end of each lateral should be at least 1 GPM (RO-DRIP) or 2 GPM (RO-DRIP XL) to ensure sediment is properly removed. Pressurize the drip system immediately after installation to determine if the system is working properly. A well-planned irrigation schedule is necessary for healthy plants and high yields. It is important to apply water frequently enough so the plants are never subject to stress. This can mean irrigating several times per week, or even every day.





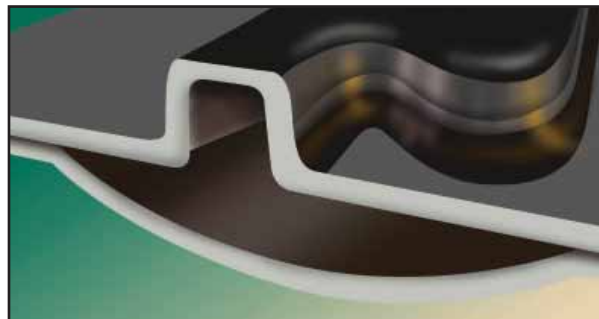
Vortex Flow Action

Designed-in turbulence keeps particles suspended and moving through every corner, twist, and turn of the flow channel. With no place to rest, particles are flushed out continuously, before they build into real problems.



Precision-Molded Channel

Precision engineering ensures large, uniform channels. Each contour is designed and molded to eliminate variability and deliver uniform flow rates. Other drip tapes simply can't match this level of performance—run after run.



Expanding Flow Channel

This exclusive RO-DRIP feature creates a truly remarkable "second line of defense" against plugging during high-contaminant conditions. The flow channel can actually expand to purge an obstruction and restore flow.

RO-DRIP®

5/8" RO-DRIP			
Product	Operating Pressure (PSI)		Flushing Pressure (PSI)
	Min	Max	Max
5 mil	6	10	12
6 mil	6	10	15
8 mil	6	12	15
10 mil	6	12	20
13 mil	6	15	25
15 mil	6	15	25

3/4" RO-DRIP

3/4" RO-DRIP			
Product	Operating Pressure (PSI)		Flushing Pressure (PSI)
	Min	Max	Max
6 mil	6	10	12
8 mil	6	12	15
10 mil	6	12	20

RO-DRIP® XL

7/8" RO-DRIP			
Product	Operating Pressure (PSI)		Flushing Pressure (PSI)
	Min	Max	Max
8 mil	6	12	15
10 mil	6	12	20
13 mil	6	15	25
15 mil	6	15	25

5/8" (16 mm) RO-DRIP

5/8" (16 mm) RO-DRIP											
	STANDARD				METRIC						
Thickness	Outlet Spacing (In)	Flow Rate**	Roll Length (Ft)	Roll Weight (lbs)	Outlet Spacing (cm)	Flow Rate***	Roll Length (m)	Roll Weight (Kg)	Item Number	*	Rolls per pallet
5 mil	4	40	12,500	73	10	500	3,810	33	RD5-050440-125		16
5 mil	6	30	12,500	73	15	370	3,810	33	RD5-050630-125	*	16
5 mil	8	20	12,500	73	20	250	3,810	33	RD5-050820-125		16
5 mil	8	27	12,500	73	20	340	3,810	33	RD5-050827-125		16
5 mil	8	40	12,500	73	20	500	3,810	33	RD5-050840-125		16
5 mil	12	15	12,500	73	30	185	3,810	33	RD5-051215-125		16
5 mil	12	24	12,500	73	30	300	3,810	33	RD5-051224-125		16
6 mil	4	40	10,000	70	10	500	3,048	32	RD5-060440-100		16
6 mil	4	60	10,000	70	10	750	3,048	32	RD5-060660-100		16
6 mil	8	20	10,000	70	20	250	3,048	32	RD5-060820-100		16
6 mil	8	27	10,000	70	20	340	3,048	32	RD5-060827-100	*	16
6 mil	8	40	10,000	70	20	500	3,048	32	RD5-060840-100		16
6 mil	12	15	10,000	70	30	185	3,048	32	RD5-061215-100		16
6 mil	12	24	10,000	70	30	300	3,048	32	RD5-061224-100		16
8 mil	4	40	7,500	67	10	500	2,286	30	RD5-080440-750		16
8 mil	4	60	7,500	67	10	750	2,286	30	RD5-080660-750		16
8 mil	8	20	7,500	67	20	250	2,286	30	RD5-080820-750		16
8 mil	8	27	7,500	67	20	340	2,286	30	RD5-080827-750	*	16
8 mil	8	40	7,500	67	20	500	2,286	30	RD5-080840-750		16
8 mil	12	15	7,500	67	30	185	2,286	30	RD5-081215-750		16
8 mil	12	24	7,500	67	30	300	2,286	30	RD5-081224-750		16
8 mil	16	10	7,500	67	41	125	2,286	30	RD5-081610-750	*	16
8 mil	16	20	7,500	67	41	250	2,286	30	RD5-081620-750	*	16
10 mil	8	40	6,000	68	20	500	1,828	31	RD5-100840-60		16
10 mil	12	15	6,000	68	30	185	1,828	31	RD5-101215-60	*	16
10 mil	12	24	6,000	68	30	300	1,828	31	RD5-101224-60		16
10 mil	16	20	6,000	68	41	250	1,828	31	RD5-101620-60	*	16
13 mil	8	40	5,000	73	20	500	1,524	33	RD5-130840-50		16
13 mil	12	24	5,000	73	30	300	1,524	33	RD5-131224-50		16
13 mil	24	17	5,000	73	61	210	1,524	33	RD5-132417-50	*	16
15 mil	8	40	4,000	68	20	500	1,219	31	RD5-150840-40		16
15 mil	12	24	4,000	68	30	300	1,219	31	RD5-151224-40		16
15 mil	24	17	4,000	68	61	210	1,219	31	RD5-152417-40	*	16

Recommended operating pressure: 8-10 PSI (.55 - .70 bars)

Standard filtration requirement: 140 mesh (110 microns)

*Limited or custom order product **GPH/100' @ 8 PSI ***LPH/100 @ .55 BARs

3/4" (19 mm) RO-DRIP

3/4" (19 mm) RO-DRIP											
STANDARD					METRIC						
Thickness	Outlet Spacing (In)	Flow Rate**	Roll Length (Ft)	Roll Weight (lbs)	Outlet Spacing (cm)	Flow Rate***	Roll Length (m)	Roll Weight (Kg)	*	Item Number	Rolls per pallet
6 mil	8	40	9,000	66	20	500	2,743	30		RD6-060840-90	16
6 mil	12	15	9,000	66	30	185	2,743	30		RD6-061215-90	16
6 mil	12	24	9,000	66	30	300	2,743	30		RD6-061224-90	16
8 mil	8	20	6,500	68	20	250	1,981	31	*	RD6-080820-65	16
8 mil	8	40	6,500	68	20	500	1,981	31		RD6-080840-65	16
8 mil	12	15	6,500	68	30	185	1,981	31		RD6-081215-65	16
8 mil	12	24	6,500	68	30	300	1,981	31		RD6-081224-65	16
10 mil	12	15	5,000	64	30	185	1,524	29		RD6-101215-50	16

7/8" (22 mm) RO-DRIP XL

7/8" (22 mm) RO-DRIP XL											
STANDARD					METRIC						
Thickness	Outlet Spacing (In)	Flow Rate**	Roll Length (Ft)	Roll Weight (lbs)	Outlet Spacing (cm)	Flow Rate***	Roll Length (m)	Roll Weight (Kg)	*	Item Number	Rolls per pallet
8 mil	8	27	5,700	65	20	340	1,737	29	*	RD7-080827-57	16
8 mil	8	40	5,700	65	20	500	1,737	29		RD7-080840-57	16
8 mil	12	15	5,700	65	30	185	1,737	29		RD7-081215-57	16
8 mil	12	24	5,700	65	30	300	1,737	29		RD7-081224-57	16
10 mil	4	40	5,000	73	10	500	1,524	33	*	RD7-100440-50	16
10 mil	12	15	5,000	73	30	185	1,524	33		RD7-101215-50	16
10 mil	12	24	5,000	73	30	300	1,524	33		RD7-101224-50	16
13 mil	12	15	3,500	65	30	185	1,066	29		RD7-131215-35	16
13 mil	12	24	3,500	65	30	300	1,066	29		RD7-131224-35	16
13 mil	24	17	3,500	65	61	210	1,066	29		RD7-132417-35	16
15 mil	8	40	3,000	65	20	500	914	29	*	RD7-150840-30	16
15 mil	12	15	3,000	65	30	185	914	29		RD7-151215-30	16
15 mil	12	24	3,000	65	30	300	914	29		RD7-151224-30	16

RO-DRIP is a registered trademark of Deere & Company

5/8"(16 mm) RO-DRIP -Mini Rolls

Thickness	STANDARD				METRIC				Item Number	Rolls per pallet
	Outlet Spacing (In)	Flow Rate**	Roll Length (Ft)	Roll Weight (lbs)	Outlet Spacing (cm)	Flow Rate***	Roll Length (m)	Roll Weight (Kg)		
5 mil	8	40	2,460	16	20	500	750	7	RD5-050840-24	63
5 mil	12	24	2,460	16	30	300	750	7	RD5-051224-24	63
6 mil	4	60	1,975	15	10	750	600	7	RD5-060660-19	63
6 mil	8	40	1,975	15	20	500	600	7	RD5-060840-19	63
6 mil	12	24	1,975	15	30	300	600	7	RD5-061224-19	63
8 mil	4	60	1,640	16	10	750	500	7	RD5-080660-16	63
8 mil	8	40	1,640	16	20	500	500	7	RD5-080840-16	63
8 mil	12	24	1,640	16	30	300	500	7	RD5-081224-16	63
13 mil	8	40	985	16	20	500	300	7	RD5-130840-9	63
13 mil	12	24	985	16	30	300	300	7	RD5-131224-9	63

